

## *Sullivan's Gulch Neighborhood Association*

### *Land Use and Transportation Committee November 1, 2014 Newsletter*

#### *Committee Members:*

*Carol Gossett, Chair*

*Lauren Golden-Jones*

*Andrew Alvis*

*John Frewing*

*Melissa Cannon*

*Martin Rowe*

#### **Sullivan's Gulch Neighborhood Association 2014 General Board Meeting**

Icy weather resulted in the postponement of the Sullivan's Gulch 2014 General Board Meeting in November. That meeting has been rescheduled:

#### **2014 Sullivan's Gulch Neighborhood Association General Meeting**

**When: Tuesday, December 9, 2014**

**Time: 7:00 PM**

**Place: Grace Memorial Church**

**NE Weidler at 17<sup>th</sup> Avenue**



#### **Oregon Department of Transportation Holds a Public Meeting**

The **City of Portland** is in the process of preparing a comprehensive plan as required by State of Oregon law. To comply, the City prepared a **Central City Plan** that devoted itself to the downtown area on the west side of the river and included an area from the river to NE 15<sup>th</sup> Avenue on the east side of the river. Once completed, the City looked at quadrants of that area in order to develop a more detailed plan. The **Sullivan's Gulch Neighborhood Association Board** selected **Carol Gossett** to attend the **N/NE Quadrant Plan** meetings. Carol attended twenty four (24) meetings as representative of this neighborhood.

Other neighborhoods represented at these meetings included: **Eliot, Lloyd District and Irvington** all neighborhoods, just as Sullivan's Gulch, located within the boundaries of the N/NE Quadrant Plan. During the planning process neighbors agreed the interchange at NE Broadway and I-5 needs modifications to address the safety issues presently created by lane configuration. This particular interchange has the highest incidents of crashes in the State of Oregon.

Since the completion of the N/NE Quadrant Plan meetings, the **Oregon Department of Transportation (ODOT)** has been working on alternative recommendations related to traffic movement and safety at this location. The schedule for this planning effort includes:

**Fall 2014 – Preliminary Design Phase**

**Late 2015 – Final Design Phase**

**Summer 2016 – Construction Phase \***

\* All phasing is subject to change based on conditions determined during the planning and implementation phases of this work.

At the first public meeting related to the highway planning process, the following drawings were presented at a recent public meeting, the date, time, and place of which was posted on the Sullivan's Gulch website:

[www.sullivansgulch.org](http://www.sullivansgulch.org)



## I-5 Southbound Off-Ramp at North Broadway

### Project Elements



As meeting proceed, look for additional meetings and public engagement events on the Sullivan's Gulch website and in this SGNA-LUTC Newsletter.

#### Sullivan's Gulch Neighborhood Association Land Use and Transportation Committee (SGNA-LUTC) Topics in 2015

The SGNA-LUTC listens to the neighborhood in order to inform our meetings and to keep communication between neighbors and our committee relevant. Over the past few months there has been a lot of discuss regarding the condition of some residential buildings in our community. At the same time, the **Northeast Coalition of Neighborhoods (NECN)** has taken on the subject of demolition. In monitoring the NECN process, it is not clear that their approach to demolition of buildings is a good methodology for **Sullivan's Gulch**. Therefore, the **SGNA-LUTC** will continue discussions related to housing stock in our own neighborhood. In order to engage the entire community, we may consider a neighborhood charrette on this topic.

We know neighbors are interested in this topic from the feedback received and we feel it is important to have a neighborhood discussion on the topic, uninfluenced by other organizations at this time. Our purpose is to always do what is correct for the preservation of our neighborhood and the good of the people in the neighborhood.

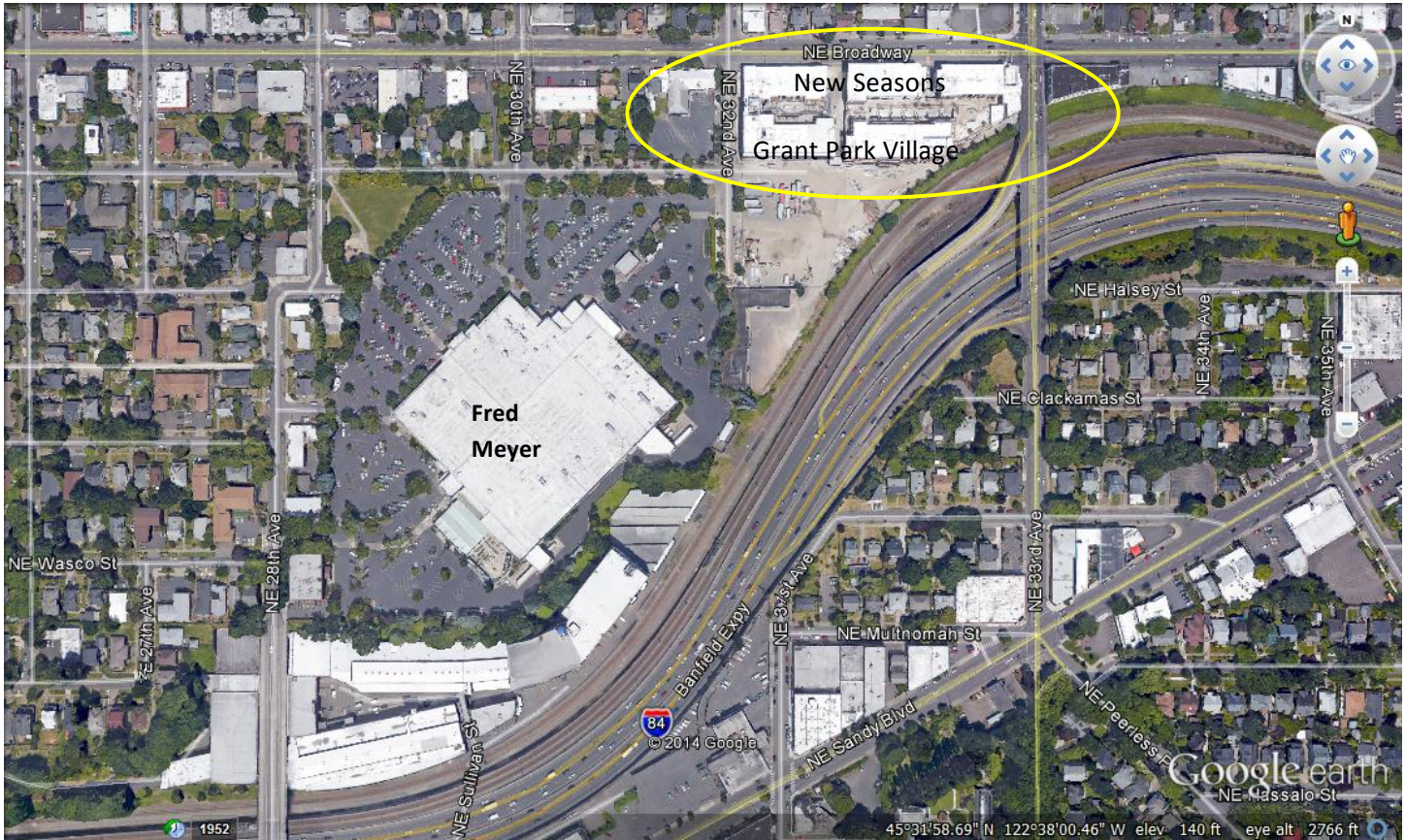
**Come to the SGNA General Meeting to hear about the SGNA-LUTC guidelines for land use issues in Sullivan's Gulch**



## Sullivan's Gulch – Grant Park Village Makes it to Google Maps

If you read the SGNA-LUTC newsletters, you know we use Google Maps to illustrate projects, points, and perspectives within our articles. In the past we have needed to draw rectangles on the maps to illustrate our newest neighbor, Grant Park Villages at the intersection of NE Broadway and 33<sup>rd</sup> Avenue. That is no longer the case. Google has photographed the area anew and the buildings are now clearly shown on the map resource.

The following is an example of the Google map illustration along NE Broadway between 28<sup>th</sup> and 33<sup>rd</sup> Avenues. Another sign our neighborhood is gaining positive recognition for all we do:



*See You Next Year! Enjoy the Holiday Season!*

The SGNA-LUTC wishes our neighborhood a Happy Holiday Season as we look forward to 2015 and all the exciting events; planned and unexpected that will make Sullivan's Gulch the place to be in 2015 and beyond. Be safe, be warm, and be a good neighbor.

*Happy Holidays*