



CONSTRUCTION ACTIVITY NOTICE



PROJECT OVERVIEW

- 7-STORY CONDOMINIUM BUILDING
- 2 LEVELS UNDERGROUND PARKING
- 229,000 TOTAL SQUARE FOOTAGE
- APPROXIMATE DURATION 22 MONTHS

STANDARD WORK HOURS

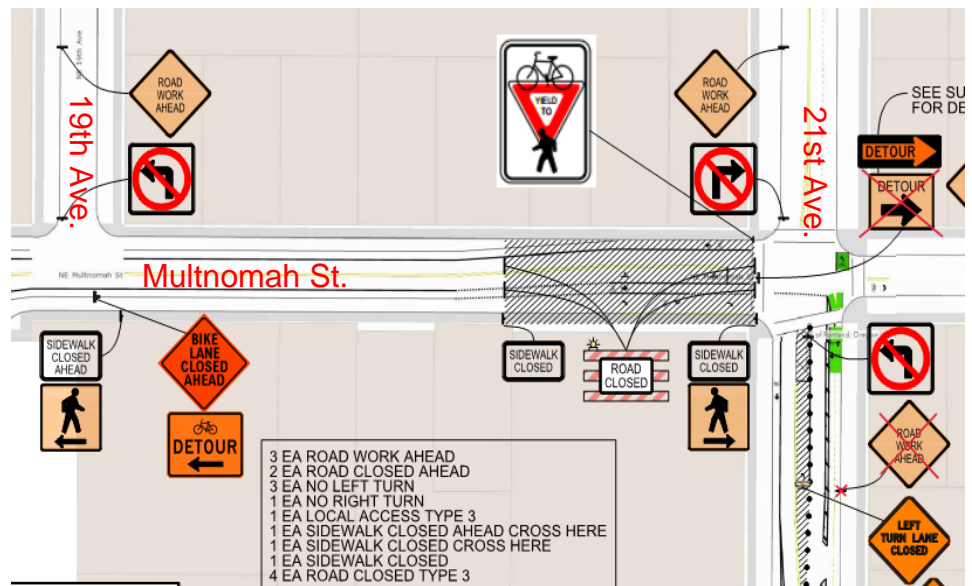
MONDAY - FRIDAY 7AM - 6PM
SATURDAY - 8AM - 5PM

WORK PLANS MAY CHANGE DUE TO UNFORESEEN CONDITIONS.

PLEASE FOLLOW TRAFFIC RE-ROUTES FOR PEDESTRIANS AND VEHICLES.

UPCOMING CONSTRUCTION ACTIVITY

The Sullivan's Gulch project will be erecting a tower crane resulting in a street closure on Multnomah Street. The street closure, pictured in the diagram to the right, will span in between NE 19th Ave. to NE 21st Ave. The closure will start at 6PM on January 19th and end January 22nd at 12AM. The closed area will be available for local access only, through access will be prohibited.



CONTACT INFORMATION

QUESTIONS ABOUT CONSTRUCTION?

TEXT HOTLINE: (503) 476-1732

EMAIL: sullivansgulch@andersen-const.com

FOR CONSTRUCTION EMERGENCIES CONTACT

Glenn Whitefield

**Project Superintendent
(971) 275-5431**